

MONTHLY MEMBERSHIP PROGRESS REPORT

District 11 E1

Results as of: 3/31/2020

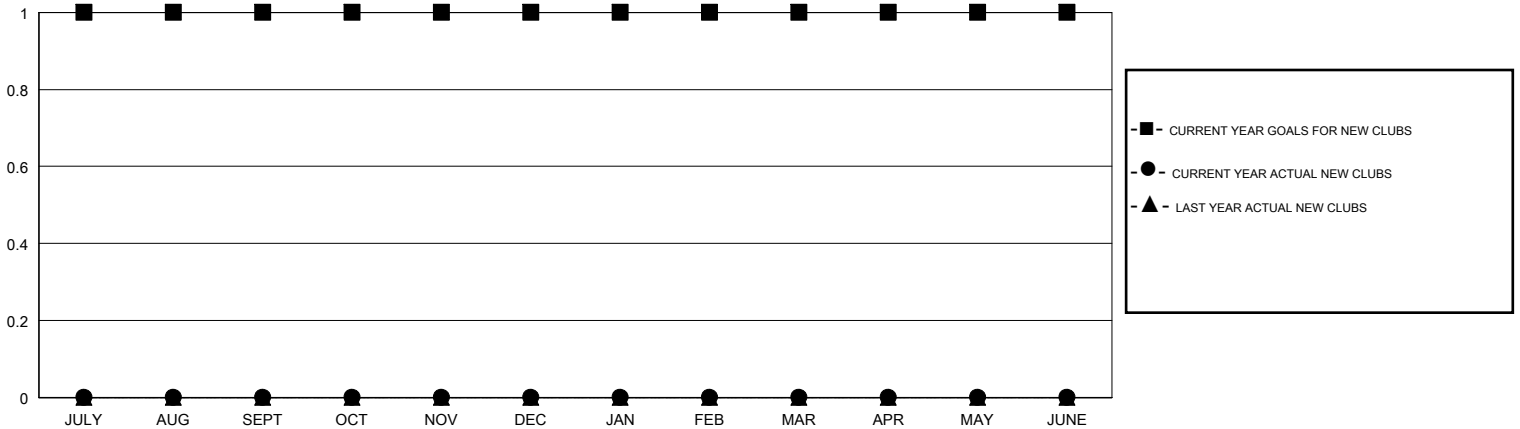
GMT:

LOCATION MICHIGAN

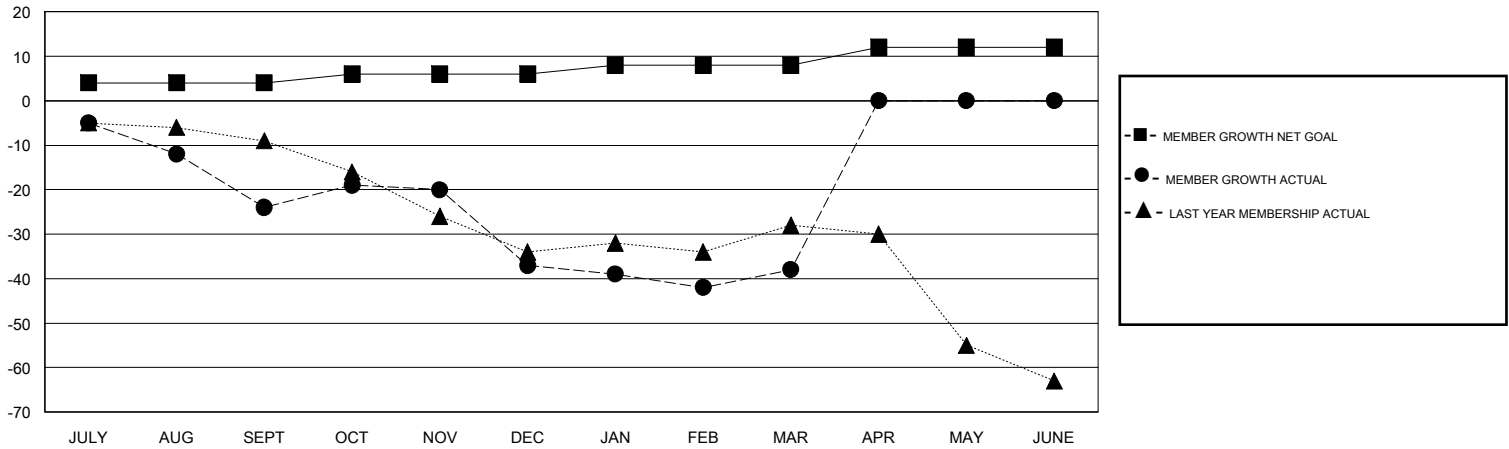
GMT CA

Clubs				Members			
RESULTS FOR 2019-2020				RESULTS FOR 2019-2020			
QUARTER	NEW CLUB GOAL	NEW CLUBS	DROPPED CLUBS	QUARTER	MEMBER GROWTH NET GOAL	MEMBER GROWTH ACTUAL	DROPPED MEMBERS ACTUAL (including transfers)
JULY/AUG/SEPT	1	0	0	JULY/AUG/SEPT	4	11	33
OCT/NOV/DEC	0	0	1	OCT/NOV/DEC	2	18	27
JAN/FEB/MAR	0	0	0	JAN/FEB/MAR	2	17	17
APR/MAY/JUNE	0	0	0	APR/MAY/JUNE	4	0	0

GOALS AND ACTUAL NEW CLUBS CUMULATIVE



GOALS AND ACTUAL MEMBERS CUMULATIVE



DROPPED CLUBS: 1	16 CLUBS OF 42 ADDED 1 OR MORE NEW MEMBERS	<u>GENDER DISTRIBUTION</u>
		MALE 676 (65.76%)
		FEMALE 352 (34.24%)
<u>DROPPED MEMBERS</u>	CLICK HERE FOR CUMULATIVE MEMBERSHIP DATA	TOTAL FAMILY UNIT MEMBERS 254
DECEASED 13		FAMILY MEMBERS PAYING HALF DUES 131
CLUB CANCELLED 13		
OTHER 51		
TOTAL 77		